



# DOD TECHNOLOGIES

The Leader in Low Level Toxic Gas Monitoring

The PS-7000 Series controllers provide simultaneous display and alarm functions for up to 16 or 64 gas detection devices, depending on the model. The PS-7016 provides display and alarm for up to 16 detectors, while the PS-7064 does the same for up to 64 detectors in one system. Arranged in groups of 8 channels to allow economical configuration of systems. All controllers come with Modbus Master/Slave RS-485 ports and 4 five amp alarm relays. This easy-to-configure, user friendly controller is ideal for centralizing an entire fleet of independent gas detectors.

**PS-7016**  
16-Channel  
Controller

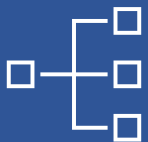


**PS-7064**  
64-Channel  
Controller



## PS-7000 SERIES | CONFIGURABLE CONTROLLERS

**GAS DETECTION**



**INTEGRATION**

**VISUALIZE ALL**



**POINTS  
SIMULTANEOUSLY**

**EASY TO**



**INSTALL**

**DIRECT ALARM**



**TO EMERGENCY  
RESPONSE**

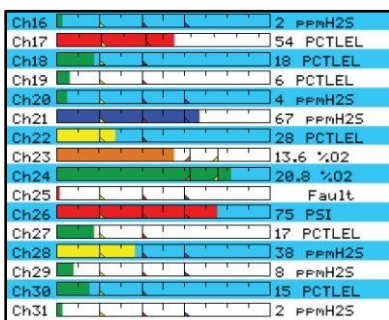


## KEY SCREENS & FEATURES



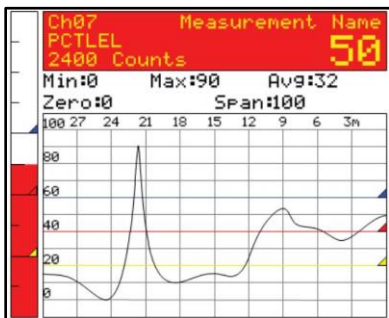
### MAIN DATA SCREEN

Displays all active channels on the same screen. Channel configurations include all active channels. Cells indicate alarm status by color.



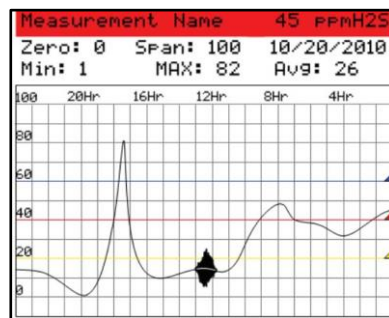
### BAR GRAPH SCREEN

Displays all active channels at the same time. Bar graphs change colors to indicate alarm status.



### 24 HR TREND SCREEN

Displays 1 channel at a time as most recent 24-hour trend. Top data fields include current reading, max - min - average readings over the 24 hours, range, channel ID, and engineering units.



### COMBINATION SCREEN

Displays 1 channel at a time as most recent 30-minute trend. Top data fields include current reading, max - min - average readings over the 24 hours, range, channel ID, and engineering units. Readings change color and flash on alarms.



### ZONE SCREEN

Displays all eight possible active zones. Alarm cells change colors and name field flashes including alarms. Allows user direct access to screen that shows which channels belong to each zone.



## TECHNICAL SPECIFICATIONS

SPEC NAME	SPECIFICATION DETAIL
Input	12 bit 4-20mA into 150 ohms input impedance; includes +power supply terminals for each channel for routing power to two or three wire transmitters
Serial Ports	Two standard RS485 ports Two additional isolated ports optional
Ethernet Port	Modbus TCP Master/Slave port with web server (Gateway for Ethernet IP, Bacnet, and other protocols available)
Alarm Relays	5 amp 30VDC or 250VAC resistive Form C
Analog Outputs (Optional)	16 bit 4-20mA output. Max load 800 ohms with nominal 24VDC power supply
Alarm Resist	Two 10-60VDC Alarm Reset Input Terminals
Digital Output	400mA @ VDC
Display	QVGA 320 x 240 pixel TFT graphic LCD with LED backlight
Ambient Temperature Range	-13°F - 140°F   -25°C - 60°C
Power Supply	10 - 30VDC (24VDC nominal) 12 Watts max required 10-0172 option = 150 Watt 10-0307 option = 600 Watt
Approvals	CE Approved CSA C22.2 No 1010.1 and C22.2 No.152 for combustibles and ISA S82.02 CSA Class I Div 2 Groups A, B, C, D



**DOD TECHNOLOGIES** | [www.dodtec.com](http://www.dodtec.com)



## REALIBILITY & SUPPORT

DOD Technologies is the leader in low level gas detection with a division focused exclusively on semiconductor processing and other high tech industries. We understand the value of your production, from the raw silicon wafer to the fabrication of a chip, and we know that just one false alarm can cost millions of dollars in lost productivity. That's why we engineered the ChemLogic product line for an enhanced standard of accuracy and reliability. Every day, DOD's gas detection technologies protect people and billions of dollars in assets at semiconductor fabs, research labs and other high tech facilities throughout the world. We have a worldwide network of service engineers who are knowledgeable and passionate about gas detection. Our portfolio includes fixed systems, portable gas detectors, controllers, systems integration and onsite field services.



Manufactured by:  
DOD Technologies  
675 Industrial Drive  
Cary, IL 60013



(815) 205-1590



[solutions@dodtec.com](mailto:solutions@dodtec.com)